

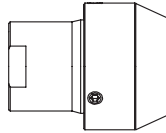
Steam injector

PN25

- with Internal thread
- with butt weld ends

(Fig. 651....2)

(Fig. 651....4)



Stainless steel
Fig. 651

Page 2

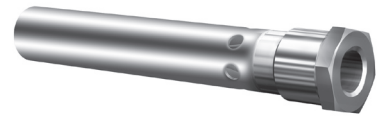


Fig. 651....2

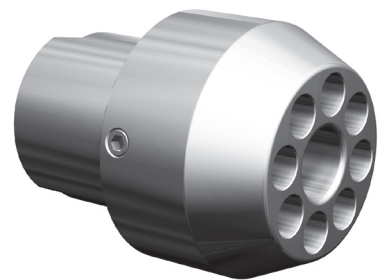


Fig. 651....4

Steam injector (Stainless steel)

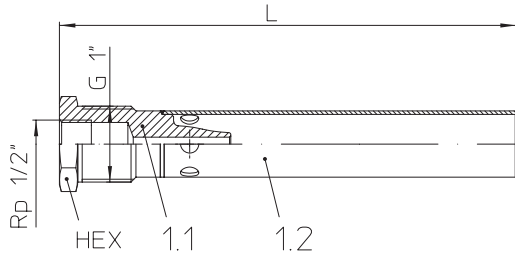


Fig.651....2 with Internal thread (Rp 1/2) and External thread (R 1)

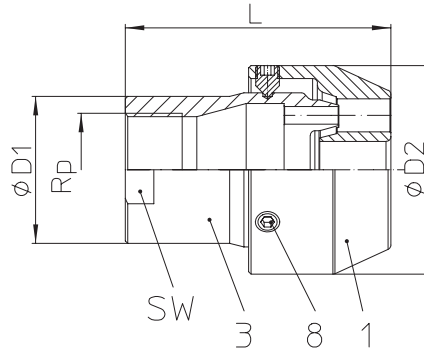


Fig.651....2 with Internal thread (Rp 1 - Rp 1 1/2)

Figure	Nominal pressure	Material	Nominal diameter / NPS	Operating pressure PS	Operating temperature TS
54.651	PN25	1.4301	Rp 1/2 - 1 1/2	17 barg	207 °C
54.651	PN25	1.4305	Rp 1 - 1 1/2		

Application in connection with ARI-TEMPROL or ARI-STEVI recommended.

Types of connection

- Internal thread2 ____ Rp 1/2 and External thread G 1 acc. to ISO 228
- Internal thread2 ____ Rp 1 to 1 1/2 acc. to DIN EN10226-1
- Butt weld ends4 ____ Weld preparation acc. to EN ISO 9692 identification No. 1.3 and 1.5
(Note restriction on operating pressure / inlet temperature depending to design!)

Features

- Steam injector without moving parts
- Direct condensation of steam for heating water (acc. to PED 97/23/EC fluid group 2)
- The released heat of condensation of the vapor is transferred directly to the water
- Installation position horizontally

Selection criteria

- Operating pressure
- Flow quantity
- Operating temperature
- Type of connection

Example for order data

=> Steam injector Fig. 651, PN25, NPS 1, screwed connection

Types of connection	Internal thread			Butt weld ends	
	15	25	40	25	40
DN	15	25	40	25	40
NPS	Rp 1/2	Rp 1	Rp 1 1/2	1	1 1/2

Face-to-face acc. to data sheet resp. customer request

L	(mm)	200	87	112	87	112
---	------	-----	----	-----	----	-----

Dimensions

	(in)	1"	--	--	--	--
External thread R	(in)	1"	--	--	--	--
ØD1	(mm)	29	48	62	33,7	48,3
ØD2	(mm)	--	74	88	74	88
HEX / SW	(mm)	36	41	55	--	--

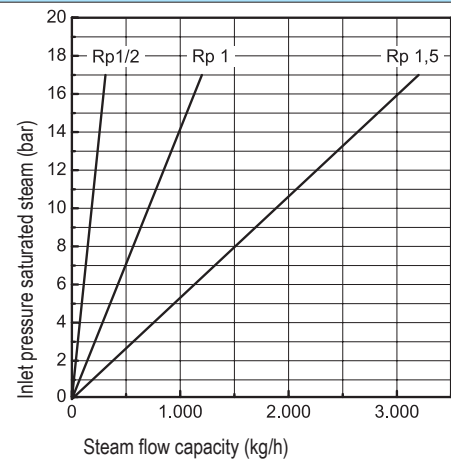
Weights

Fig. 651	(approx.) (kg)	0,4	1	2	1	2
----------	----------------	-----	---	---	---	---

Parts

Pos.	Sp.p.	Description	Fig. 54.651....2 Rp 1/2	Fig. 54.651....2 Rp 1 - 1 1/2	Fig. 54.651....4 1" - 1 1/2
1	x (unit)	Head, (cpl.)	(X5CrNi18-10, 1.4301)	X8CrNiS18-9, 1.4305	
1.1		Head	X5CrNi18-10, 1.4301	--	
1.2		Pipe	X5CrNi18-10, 1.4301	--	
3		Nozzle	--	X8CrNiS18-9, 1.4305	X5CrNi18-10, 1.4301
8		Grub screw	--	A2	
L Spare parts					

Capacity chart



The diagram shows the maximum discharge of saturated steam

Information / restriction of technical rules need to be observed! Resistance and fitness must be verified (contact manufacturer for information, refer to Product overview and Resistance list). Operating and installation instructions can be downloaded at www.ari-armaturen.com.